



EXCLUSIVE DUPLEX PENTHOUSE WITH SOLARIUM IN EL CAMPELLO



Price:	335 000 €	Bedrooms:	2
ID:	Y0902-1	Area, m²:	75 m ²
Section:	Sale	Loggia:	1
Property type:	Penthouse	Floor:	2
Location:	Alicante	Year built:	2008

Features:

- ✓ Solarium
- ✓ Air conditioning
- ✓ Underground parking
- ✓ Balcony

Description:

This elegant duplex penthouse stands out for its spaciousness, abundant natural light and excellent outdoor areas. An ideal property for those seeking comfort, privacy and a high-quality lifestyle.

The property features two generous bedrooms with built-in wardrobes and a fully equipped bathroom with a bathtub. The bright and welcoming living-dining room has direct access to a large terrace and connects to a fully fitted independent kitchen. The refrigerator and gas water heater have been recently renewed, ensuring improved efficiency and peace of mind.

From the terrace, there is access to the upper floor, where an impressive private solarium is located. This open and versatile space is fully prepared with the necessary connections to create a barbecue area, chill-out zone or even an additional living space, significantly increasing the property's value.

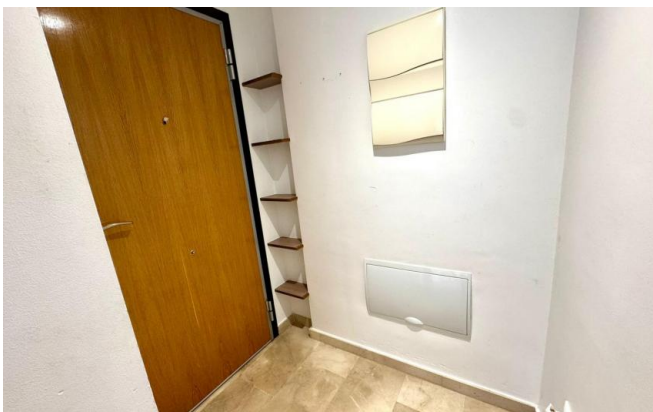
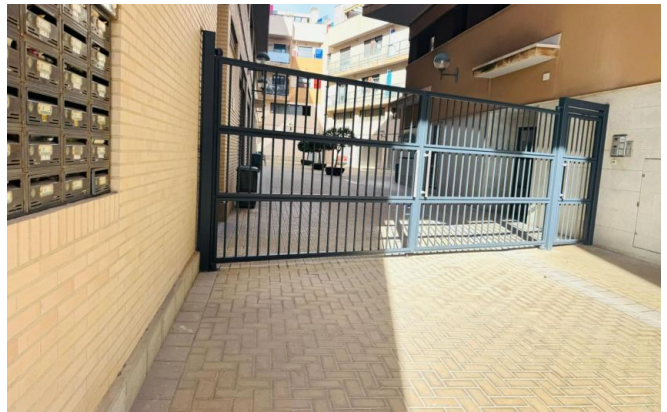
The penthouse is equipped with ducted air conditioning throughout. Large windows in all rooms, including the bathroom, provide excellent ventilation and plenty of natural light. Its southwest orientation guarantees exceptional brightness throughout the day.

The price includes a private garage space and a storage room. The building offers lift access directly connecting the apartment with the garage. The residential complex is very well maintained, equipped with video surveillance and offers a quiet and secure environment.

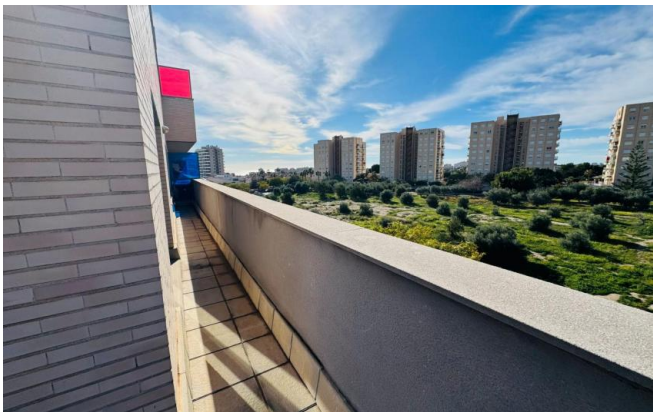
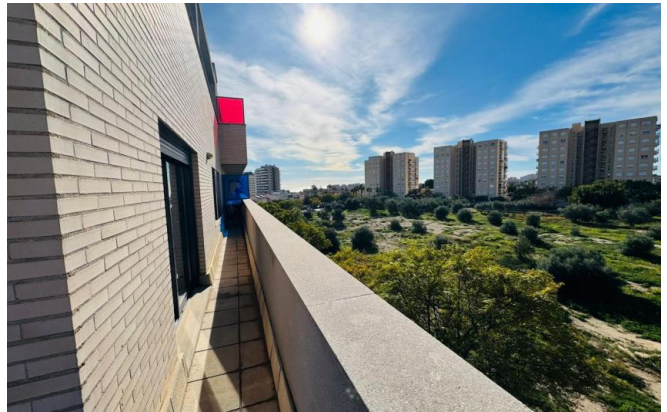
A unique penthouse with generous outdoor spaces and great potential, perfect both for comfortable living and as an investment opportunity.

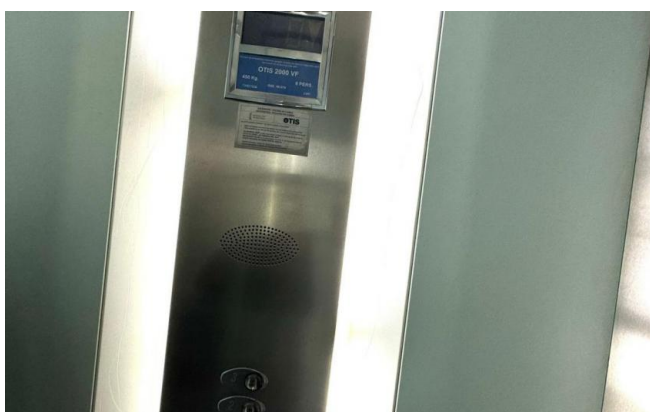
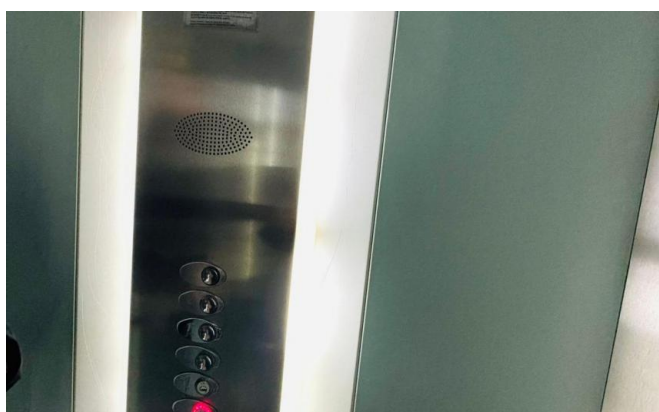
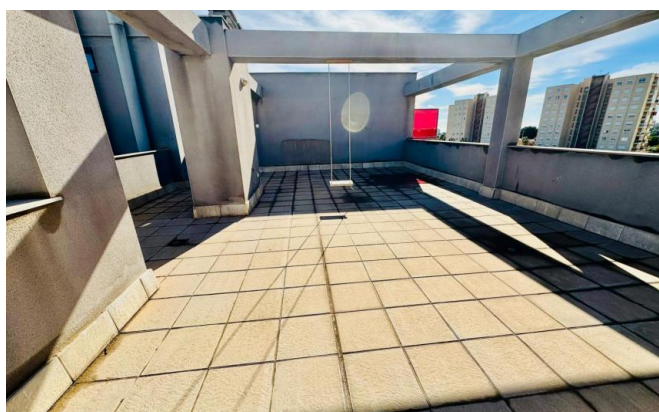
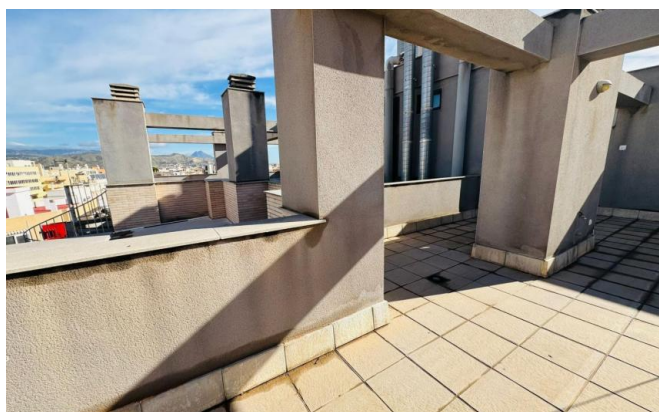
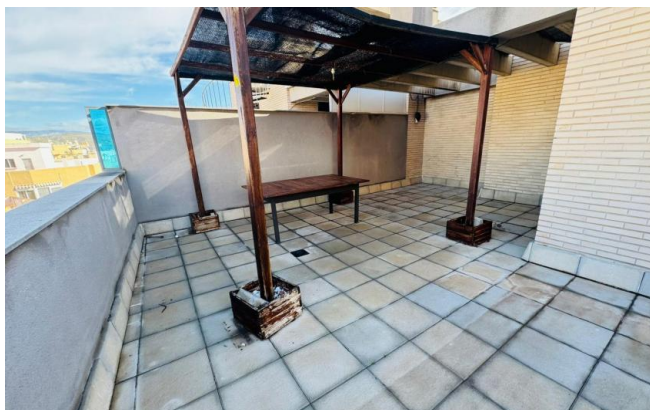


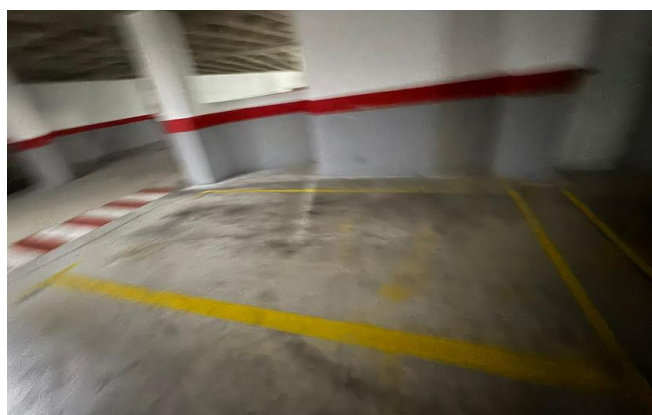
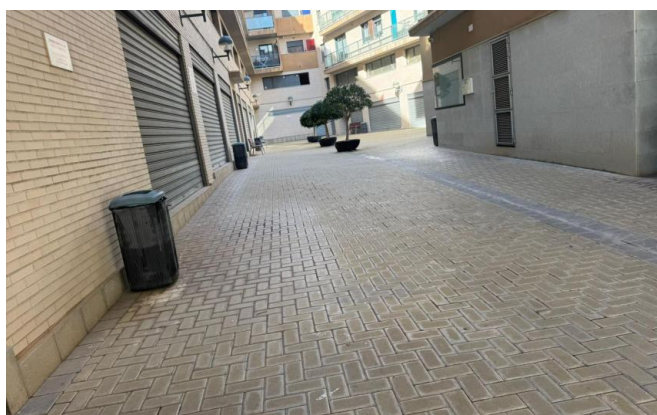
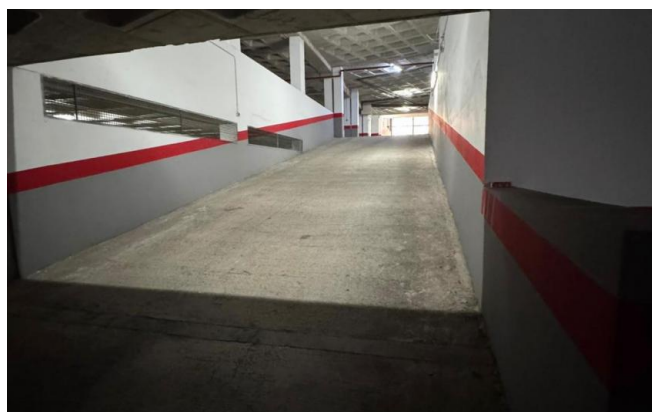
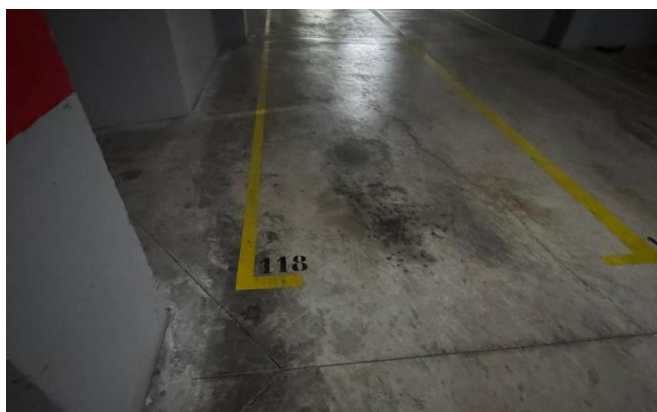
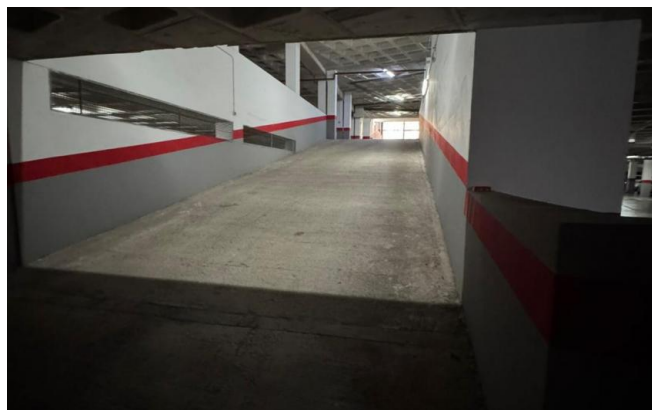
Photos:













Layouts:

